



ADVANCED EXHAUST SOLUTIONS

Disk Silencer

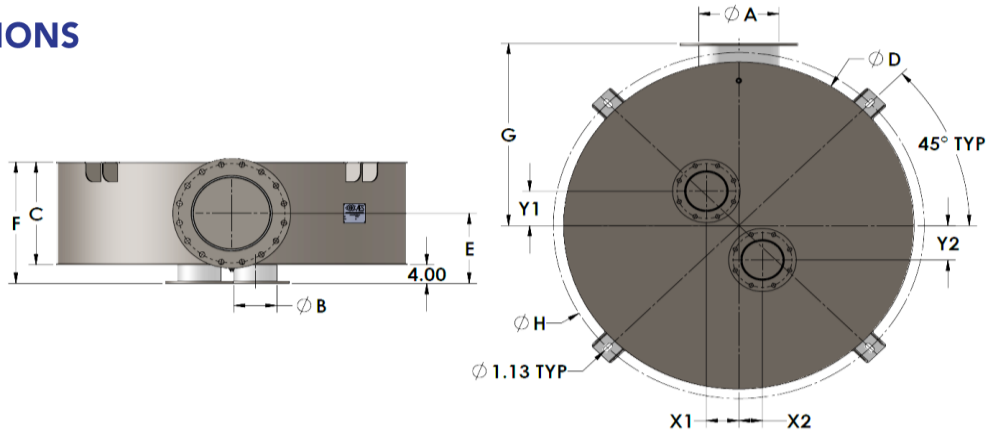
Class 5

MTU Hospital Grade

30-35 dB Overall Insertion Loss

Application

AES disk silencers offer broad range acoustic performance in a compact, thermally insulated package. AES MTU engine specific disk silencers are designed to the unique exhaust and performance requirements of your MTU application.



Part Number <small>Click For PDF</small>	Engine	Inlet Configuration	Inlet Size (B)	Outlet Size (A)	Thickness (C)	Diameter (D)	E	F	G	H	X1	X2	Y1	Y2	Weight	DXF	STEP
000-001-416	6R1600	Single	6	6	16	46	12	20	27	50	-12.50	-	0	-	606	DXF	STEP
000-001-417	8V1600	Dual	5	8	18	54	13	22	31	58	17.13	17.1	0	0	860	DXF	STEP
000-001-418	10V1600	Dual	5	8	18	54	13	22	31	58	17.13	17.1	0	0	854	DXF	STEP
000-001-419	12V1600	Dual	5	10	18	54	13	22	31	58	17.13	17.1	0	0	856	DXF	STEP
000-001-420	12V2000	Dual	6	12	22	70	15	26	39	74	24.88	24.9	-8.69	-8.69	1370	DXF	STEP
000-001-421	16V2000	Dual	6	12	24	76	16	28	42	80	24.88	24.9	-8.69	-8.69	1579	DXF	STEP
000-001-422	18V2000	Dual	8	12	24	76	16	28	42	80	25.63	25.6	-1.38	-1.38	1618	DXF	STEP
000-001-423	12V4000	Dual	10	18	26	82	17	30	45	86	0	0	10	28.5	1911	DXF	STEP
000-001-424	16V4000	Dual	10	20	28	88	18	32	48	92	0.00	0.00	7.00	30.00	2156	DXF	STEP
000-001-425	20V4000	Triple	10	22	32	96	20	36	52	100	***	See Drawing	***	***	2644	DXF	STEP

The information provided in this document is intended for informational purposes only and is subject to change without notice.

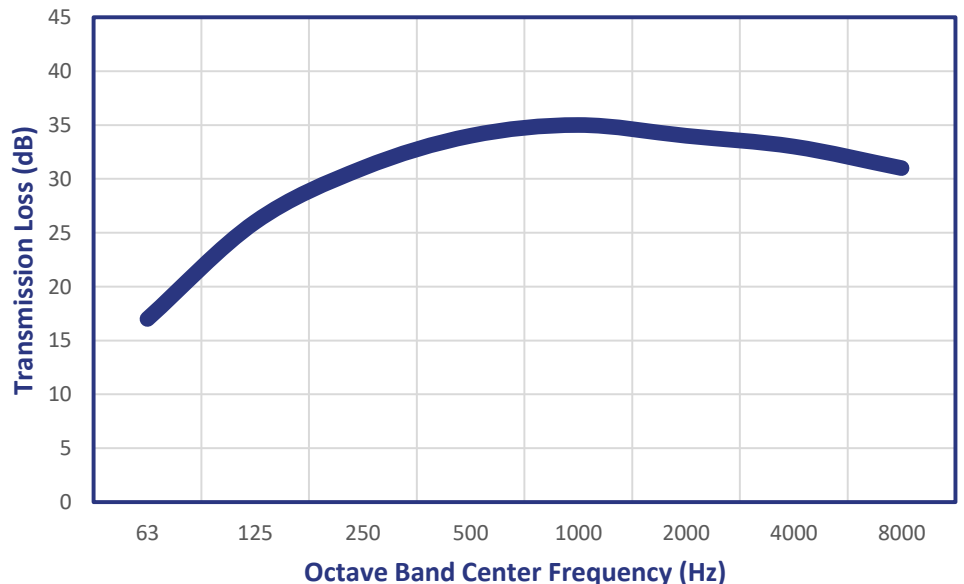
All dimensions are in inches, all weights are in pounds and are approximate.

Transmission loss curve is based on standard silencer design and is representative of approximate performance.

Overall Insertion loss is approximate, and system dependent.

* Inlet offset does not match crankshaft CL to turbo offset.

Class 5 Disk Transmission Loss Curve



Silencer Design

- Carbon Steel Service Temp Limits
900° F Continuous
1000° F Intermittent
- 125/150# ANSI Flange Bolt Pattern
- Thermal/Acoustically Insulated
- 0.50" NPT Drain
- High Temp Black Paint (rated to 1200° F)
- Top Mounted Integral Mounting Lugs
- Continuously Welded Construction

Silencer Options

- 304SS, 316SS and 321SS construction
- Aluminum Thermal Spray Coat Finish
- High Performance Ceramic Coating
- Dual Inlet and Outlet Configurations
- Custom Mounting /Structural Upfitting
- Flush Inlet Flange with Weld Nuts
- Custom Integral Emissions Modules
- Spark Arresting Capable