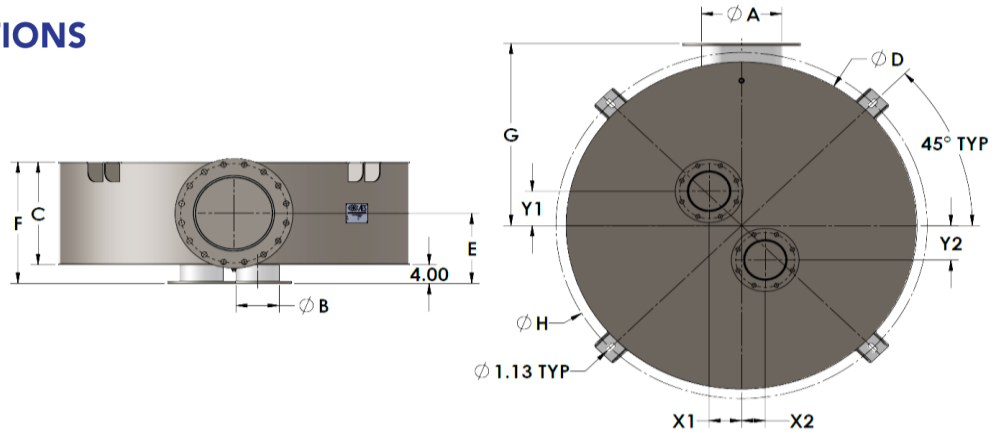


Application

AES disk silencers offer broad range acoustic performance in a compact, thermally insulated package. AES MTU engine specific disk silencers are designed to the unique exhaust and performance requirements of your MTU application.



Part Number <small>Click For PDF</small>	Engine	Inlet Configuration	Inlet Size (B)	Outlet Size (A)	Thickness (C)	Diameter (D)	E	F	G	H	X1	X2	Y1	Y2	Weight	DXF	STEP
000-001-403	6R1600	Single	6	6	14	38	11	18	23	42	-12.50	-	0	-	425	DXF	STEP
000-001-404	8V1600	Dual	5	6	14	38	11	18	23	42	30.13	30.1	0	0	470	DXF	STEP
000-001-405	10V1600	Dual	5	8	16	46	12	20	27	50	30.13	30.1	0	0	657	DXF	STEP
000-001-406	12V1600	Dual	5	8	16	46	12	20	27	50	30.13	30.1	0	0	649	DXF	STEP
000-001-407	12V2000	Dual	6	10	16	46	12	20	27	50	24.88	24.9	-8.69	-8.69	670	DXF	STEP
000-001-408	16V2000	Dual	6	12	18	54	13	22	31	58	12.57	12.6	-4.39	-4.39	837	DXF	STEP
000-001-409	18V2000	Dual	8	12	18	54	13	22	31	58	12.58	12.6	-0.68	-1.35	845	DXF	STEP
000-001-410	12V4000	Dual	10	16	22	70	15	26	39	74	0	0	9.25	9.25	1356	DXF	STEP
000-001-411	16V4000	Dual	10	18	24	76	16	28	42	80	0.00	0.00	9.00	28.00	1592	DXF	STEP
000-001-412	20V4000	Triple	10	20	26	82	17	30	45	86	***	SEE DRAWING	***	***	1869	DXF	STEP

The information provided in this document is intended for informational purposes only and is subject to change without notice.

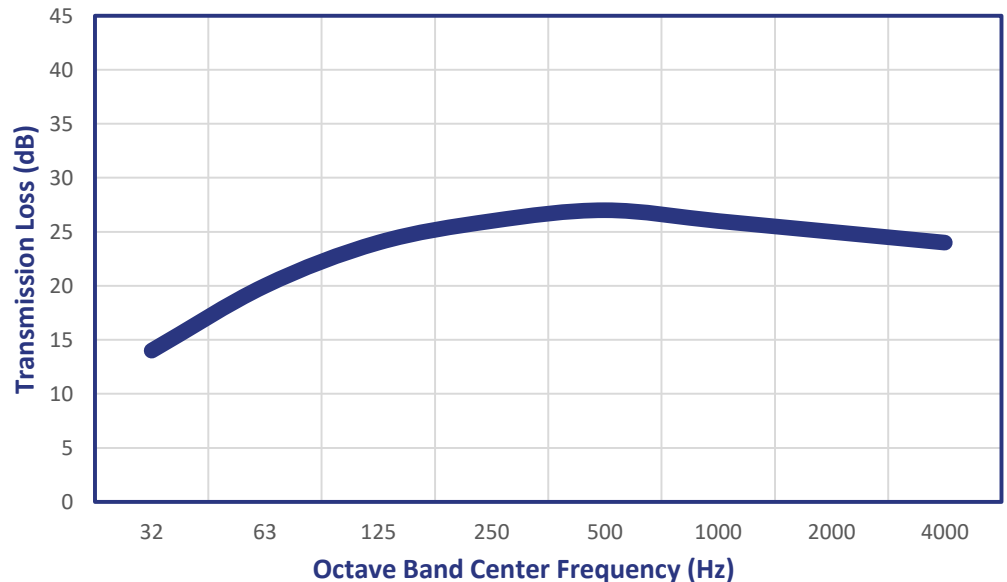
All dimensions are in inches, all weights are in pounds and are approximate.

Transmission loss curve is based on standard silencer design and is representative of approximate performance.

Overall Insertion loss is approximate, and system dependent.

* Inlet offset does not match crankshaft CL to turbo offset.

Class 4 Disk Transmission Loss Curve



Silencer Design

- Carbon Steel Service Temp Limits
900° F Continuous
1000° F Intermittent
- 125/150# ANSI Flange Bolt Pattern
- Thermal/Acoustically Insulated
- 0.50" NPT Drain
- High Temp Black Paint (rated to 1200° F)
- Top Mounted Integral Mounting Lugs
- Continuously Welded Construction

Silencer Options

- 304SS, 316SS and 321SS construction
- Aluminum Thermal Spray Coat Finish
- High Performance Ceramic Coating
- Dual Inlet and Outlet Configurations
- Custom Mounting /Structural Upfitting
- Flush Inlet Flange with Weld Nuts
- Custom Integral Emissions Modules
- Spark Arresting Capable