



**ADVANCED EXHAUST SOLUTIONS**

**Disk Silencer**

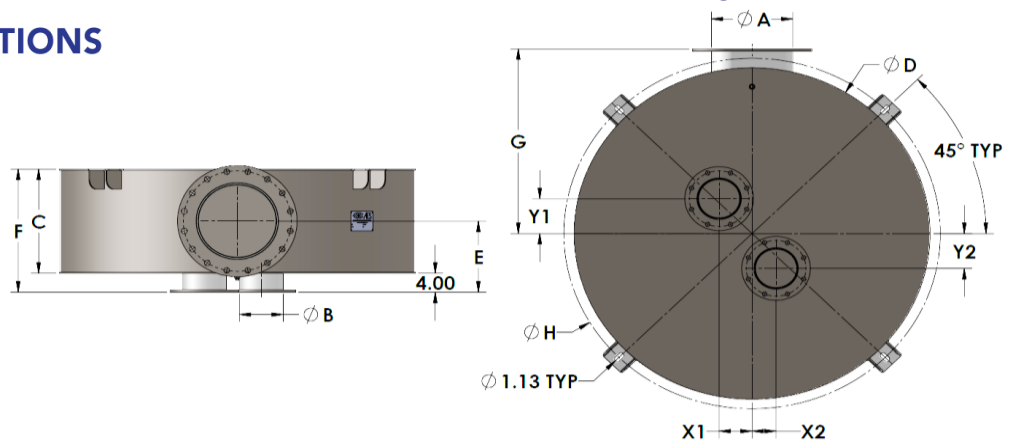
**Class 4**

**Cummins Critical Grade**

**25-30 dB Overall Insertion Loss**

**Application**

AES disk silencers offer broad range acoustic performance in a compact, thermally insulated package. AES Cummins engine specific disk silencers are designed to the unique exhaust and performance requirements of your Cummins application.



Part Number <small>Click For PDF</small>	Engine	Inlet Configuration	Inlet Size (B)	Outlet Size (A)	Thickness (C)	Diameter (D)	E	F	G	H	X1	X2	Y1	Y2	Weight	DXF	STEP
000-001-358	4BT3.3	Single	4	4	10	26	9	14	17	30	-6.00*	-	0	-	225	DXF	STEP
000-001-350	QSB5	Single	3	3	10	26	9	14	17	30	6.13	-	0	-	228	DXF	STEP
000-001-200	QSB7	Single	5	5	12	32	10	16	20	36	-7.17	-	0	-	318	DXF	STEP
000-001-201	QSL9	Single	6	6	14	38	11	18	23	42	-10.00	-	0	-	435	DXF	STEP
000-001-202	QSM11	Single	6	6	14	38	11	18	23	42	-10.00*	-	0	-	435	DXF	STEP
000-001-203	QSX15	Single	8	8	16	46	12	20	27	50	-10.00*	-	0	-	625	DXF	STEP
000-001-204	QSK19	Single	10	10	16	46	12	20	27	50	-14.41	-	0	-	625	DXF	STEP
000-001-205	QSK23	Single	10	10	16	46	12	20	27	50	-13.00	-	0	-	625	DXF	STEP
000-001-206	QST30	Dual	6	12	18	54	13	22	31	58	-6.65	-6.65	2.09	2.09	842	DXF	STEP
000-001-207	QSK50	Dual	8	14	20	62	14	24	35	66	5.59	5.59	0	14.72	1080	DXF	STEP
000-001-208	QSK60	Dual	10	18	24	76	16	28	42	80	27.31	27.31	6.88	6.88	1600	DXF	STEP
000-001-209	QSK78	Dual	12	18	24	76	16	28	42	80	-2.36	-2.36	2.00	24.53	1610	DXF	STEP
000-001-210	QSK95	Dual	14	20	26	82	17	30	45	86	10.50	10.50	2.85	2.85	1875	DXF	STEP

The information provided in this document is intended for informational purposes only and is subject to change without notice.

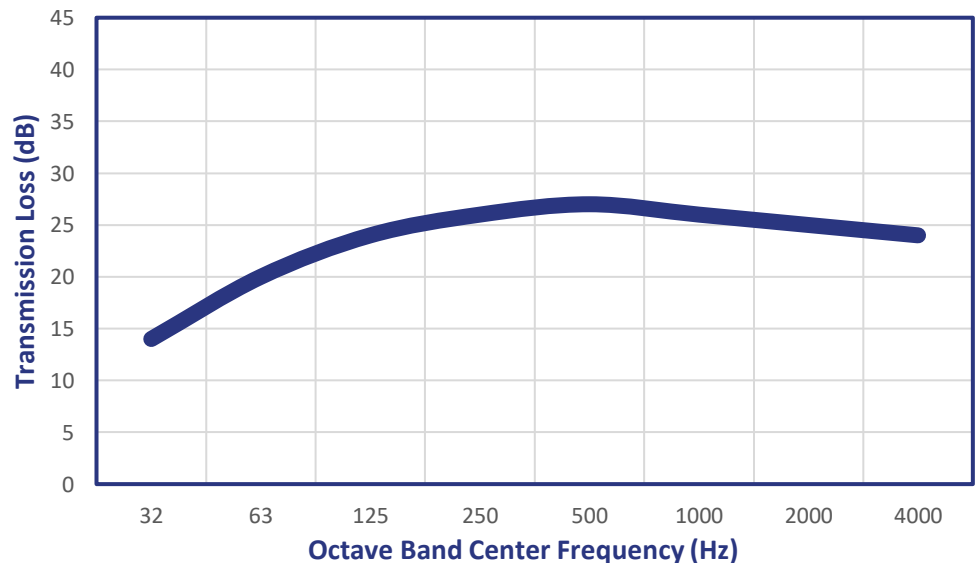
All dimensions are in inches, all weights are in pounds and are approximate.

Transmission loss curve is based on standard silencer design and is representative of approximate performance.

Overall Insertion loss is approximate, and system dependent.

\* Inlet offset does not match crankshaft CL to turbo offset.

**Class 4 Disk Transmission Loss Curve**



**Silencer Design**

- Carbon Steel Service Temp Limits  
900° F Continuous  
1000° F Intermittent
- 125/150# ANSI Flange Bolt Pattern
- Thermal/Acoustically Insulated
- 0.50" NPT Drain
- High Temp Black Paint (rated to 1200° F)
- Top Mounted Integral Mounting Lugs
- Continuously Welded Construction

**Silencer Options**

- 304SS, 316SS and 321SS construction
- Aluminum Thermal Spray Coat Finish
- High Performance Ceramic Coating
- Dual Inlet and Outlet Configurations
- Custom Mounting /Structural Upfitting
- Flush Inlet Flange with Weld Nuts
- Custom Integral Emissions Modules
- Spark Arresting Capable